

Virginia Statewide Summit on Racial Equity

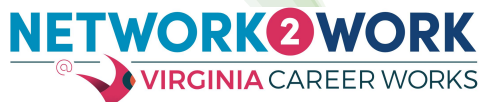
December 7 9:00 - 10:30 a.m.

SPONSORED BY 

HOSTED BY

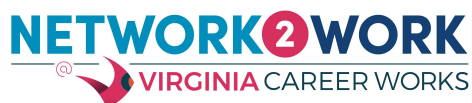


Rebuilding a Healthy Economy With a Focus on Racial Equity



Ridge Schuyler
Pilot Director, Network2Work
Dean, Community Self-Sufficiency Programs
Piedmont Virginia Community College

Income Status of Families in the Commonwealth Struggling in Our Economy

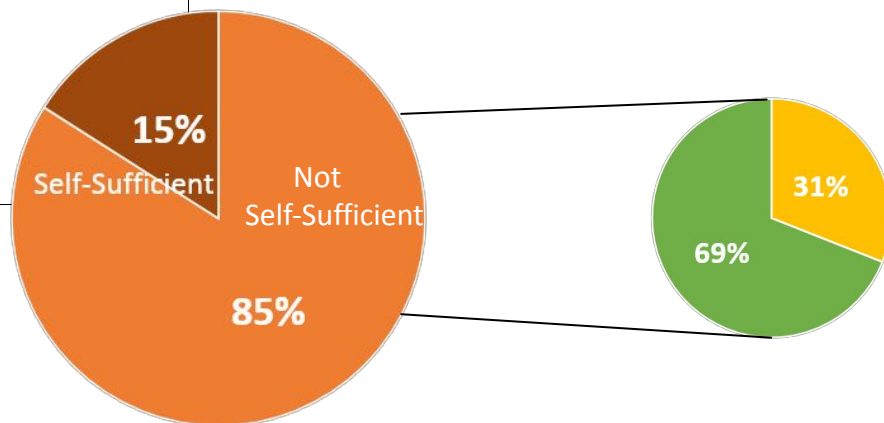


	2019
Total Number of Families	2,091,934
Families making <\$35,000	321,872
\$0-\$9,999	61,710
\$10,000-\$14,999	36,405
\$15,000-\$24,999	97,132
\$25,000-\$34,999	126,625
Percent making <\$35,000	15%
Source: U.S. Census Bureau, American Community Survey 5-year estimates	2015-2019

Income Status of Families in the Commonwealth Struggling in Our Economy



	2019
Total Number of Families	2,091,934
Families making <\$35,000	321,872
\$0-\$9,999	61,710
\$10,000-\$14,999	36,405
\$15,000-\$24,999	97,132
\$25,000-\$34,999	126,625
Percent making <\$35,000	15%
Source: U.S. Census Bureau, American Community Survey 5-year estimates	2015-2019

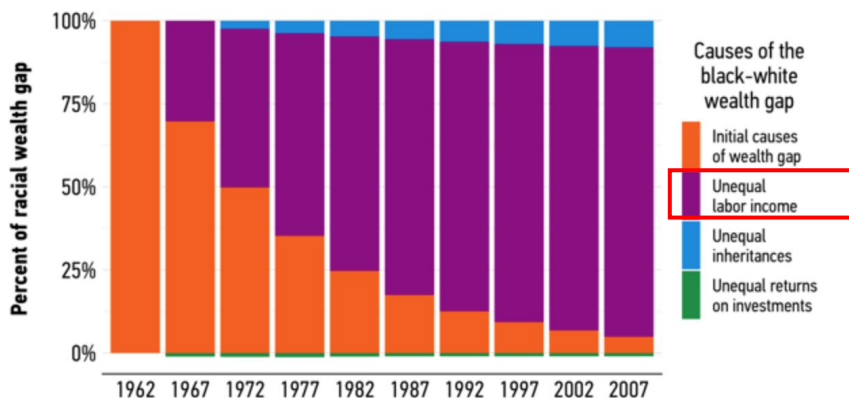


Percentage of Families in the Commonwealth Making < \$35,000



A racial income gap explains the U.S.'s wealth gap today

Federal Reserve Bank economists found unequal incomes explain the black-white wealth gap's persistence today more than inherited wealth or investment returns.

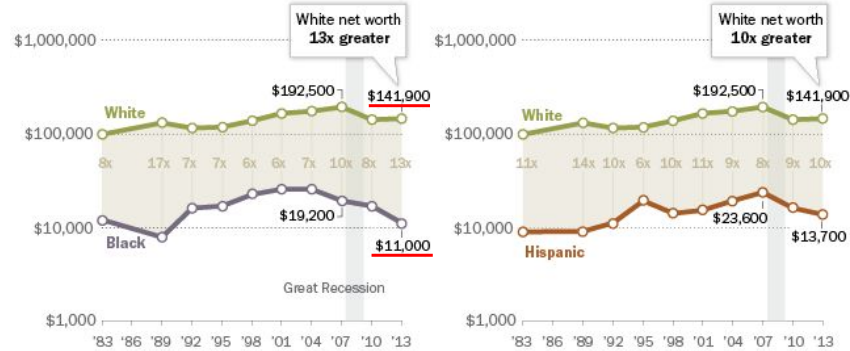


Source: Federal Reserve Bank of Cleveland research economists Dionissi Aliprantis and Daniel Carroll (David H. Montgomery / CityLab)



Racial, Ethnic Wealth Gaps Have Grown Since Great Recession

Median net worth of households, in 2013 dollars



Notes: Blacks and whites include only non-Hispanics. Hispanics are of any race. Chart scale is logarithmic; each gridline is ten times greater than the gridline below it. Great Recession began Dec. '07 and ended June '09.
Source: Pew Research Center tabulations of Survey of Consumer Finances public-use data

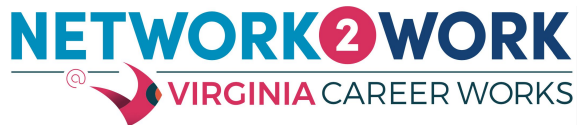
PEW RESEARCH CENTER

How do you solve poverty?

Give money to poor
people.

There is only one group
with the capability and
interest in giving people
money
—even more than they
“need”—
month after month,

Employers.

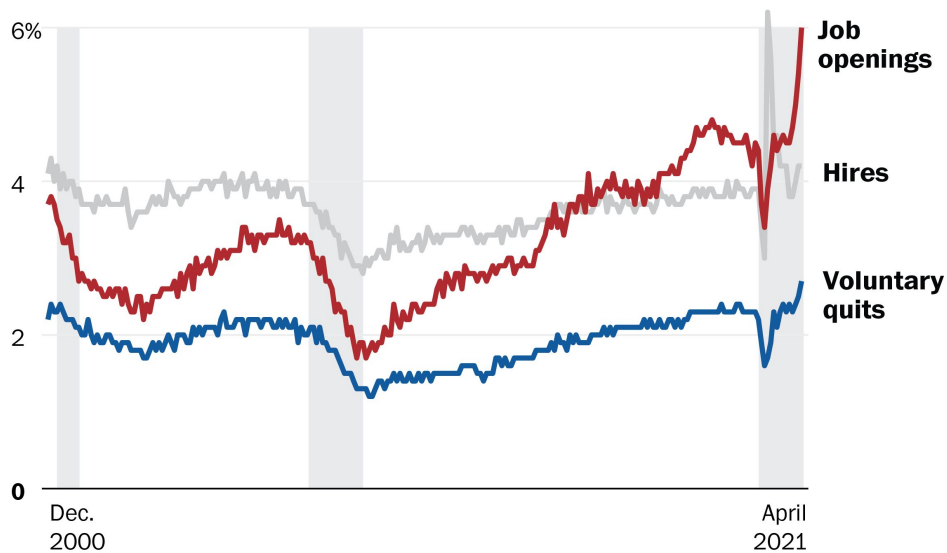


The 3-Step Network2Work framework

Step 1

Talk to employers

Job openings and quits hit highest rates on record



Note: Seasonally adjusted; total nonfarm
Source: Bureau of Labor Statistics

THE WASHINGTON POST

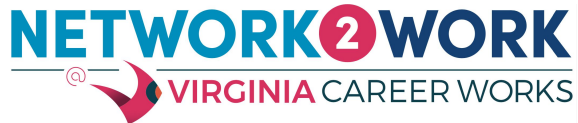


**Find a job
now**

No resume or previous work
experience required.



Amazon is an equal opportunity employer.



Step **2**

**Recruiting Job-Seekers:
The Ground Game**

Step **2**

“The Secret Sauce”



PVCC
Piedmont Virginia Community College
Workforce Services

**PVCC Workforce Services
CLASS SCHEDULE
SPRING 2019**

NOW
Certified Nurse Aide
One of the fastest growing occupations in Charlottesville

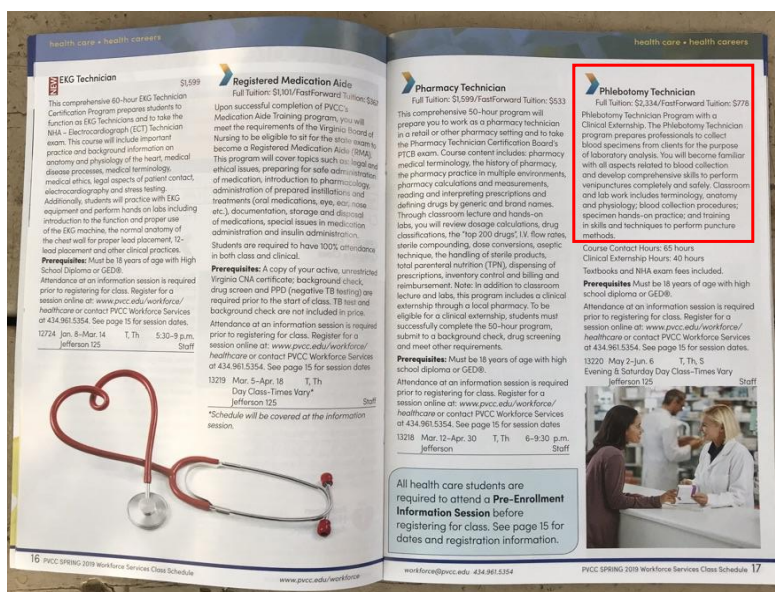
NEXT
EKG Technician
Registered Medication Aide
Certified Clinical Medical Assistant

NEW
Leadership Series
Introduction to Sales
Wine Safety & Sanitation
How to Manage Stress

Start your career as a
Certified Nurse Aide!

Register online at
www.pvcc.edu/workforce

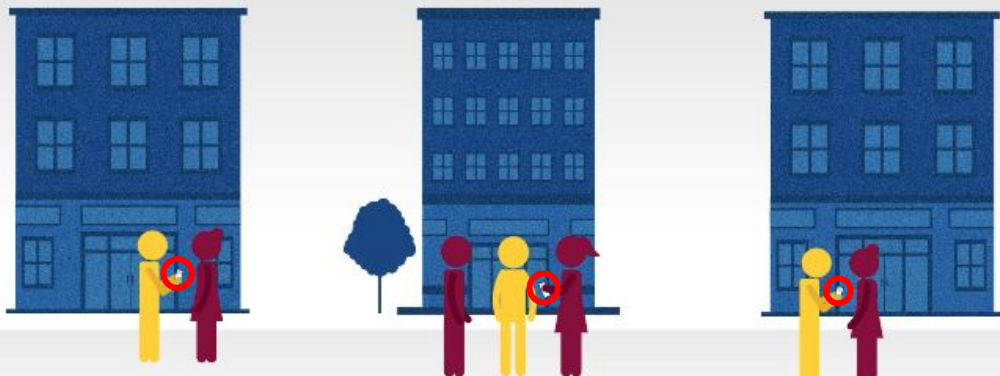
f t

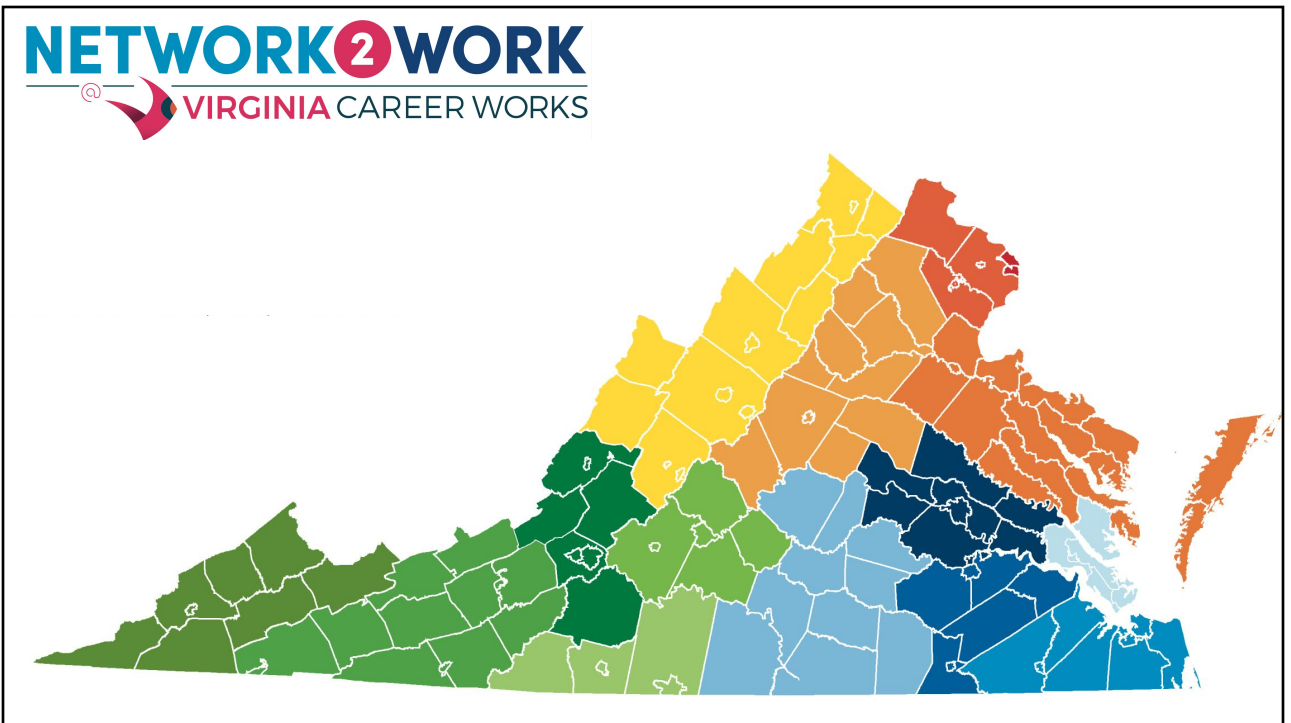
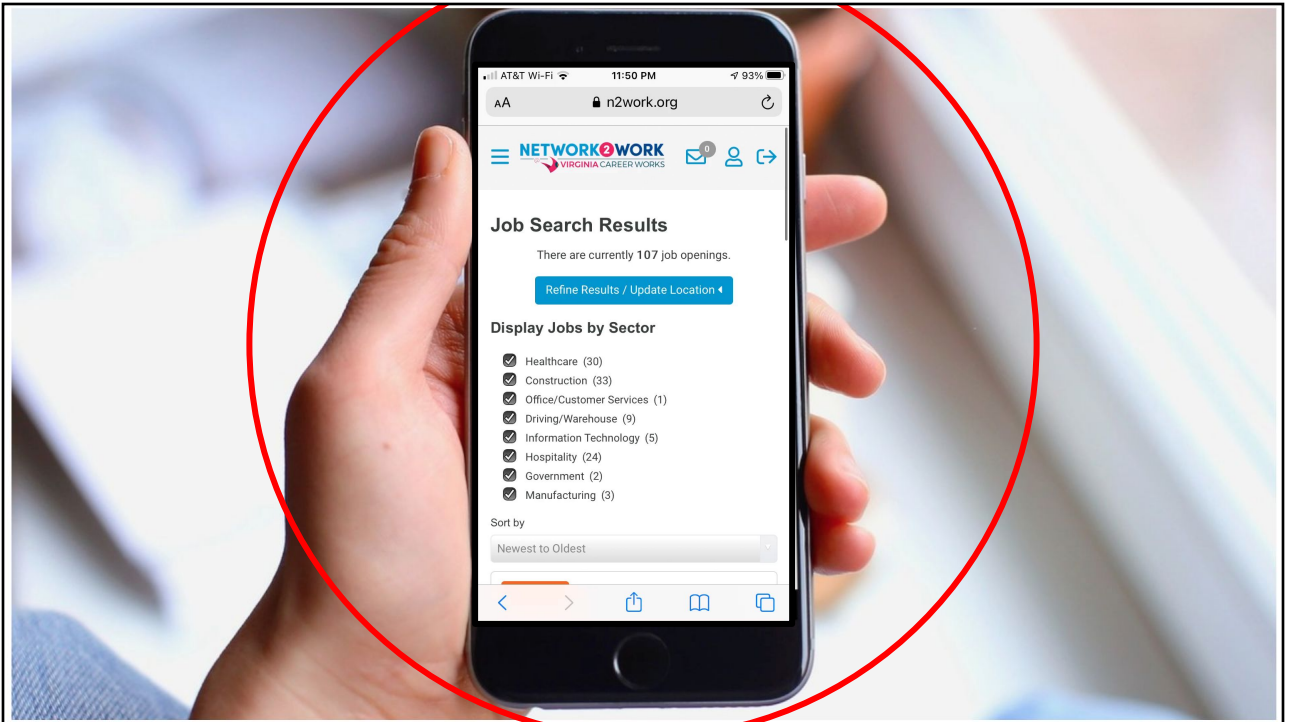


"A body of research suggests that many job seekers find employment using personal connections. For example, using retrospective survey data on recently completed unemployment spells, Blau and Robins (1990) report that contacting friends and relatives was the most fruitful job search technique for both employed and unemployed job seekers." Job Search Assistance Programs—A Review of the Literature, Office of Planning, Research and Evaluation, the Administration for Children and Families, HHS (12/2012)

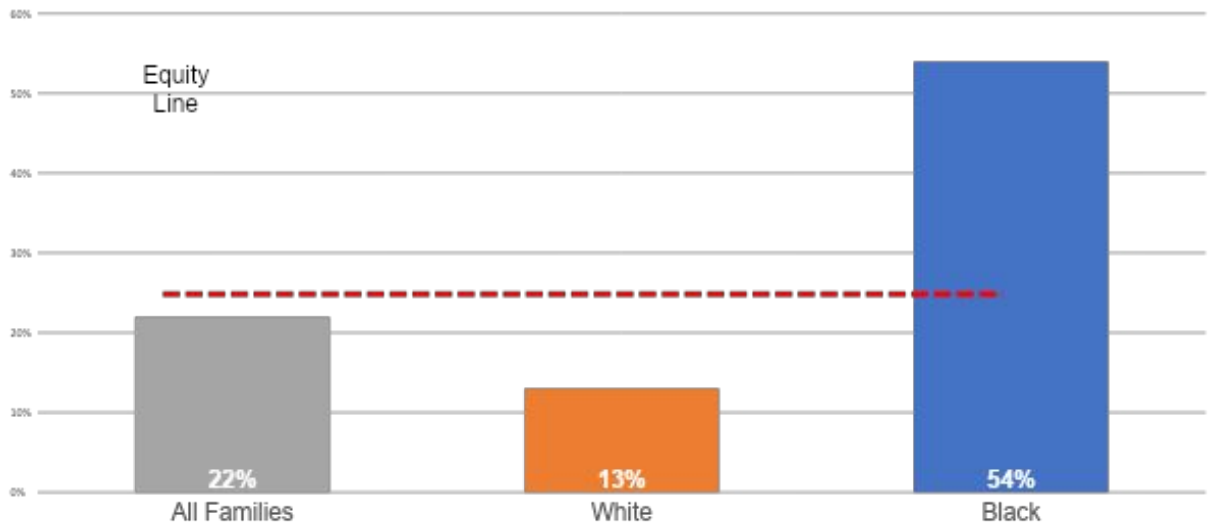
“But even if mobilizing a social network is a fruitful method of job search, it is not immediately clear how either individuals or job search assistance programs can operationalize this strategy.” Job Search Assistance Programs—A Review of the Literature, Office of Planning, Research and Evaluation, the Administration for Children and Families, HHS (12/2012)

Community-Based Connectors



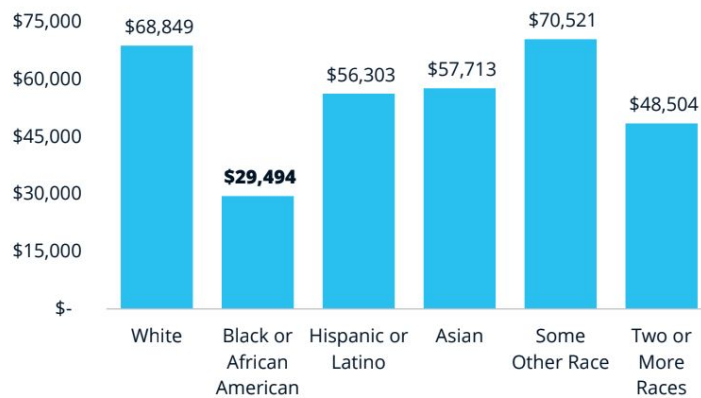


Percentage of Families in the City of Charlottesville Making < \$35,000

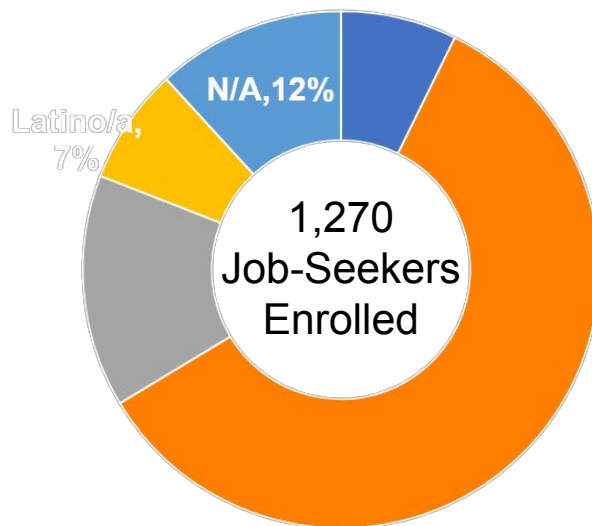


Charlottesville, Virginia

Median Income



Source: U.S. Census 2018 American Community Survey 5-Year Estimates
HR&A Advisors, Inc.

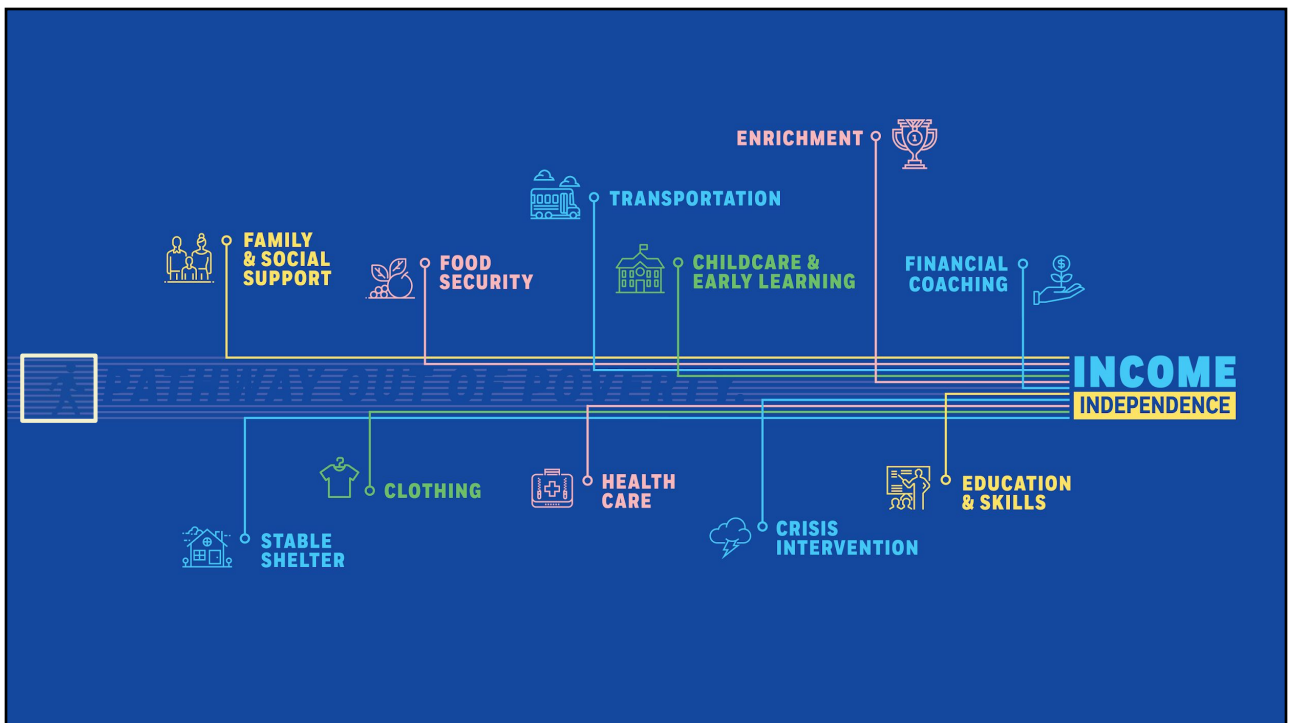


Step **3**

Remove *ALL* obstacles

Step **3**

Support the whole person





VIRGINIA GOVERNOR

Ralph S. Northam

Search



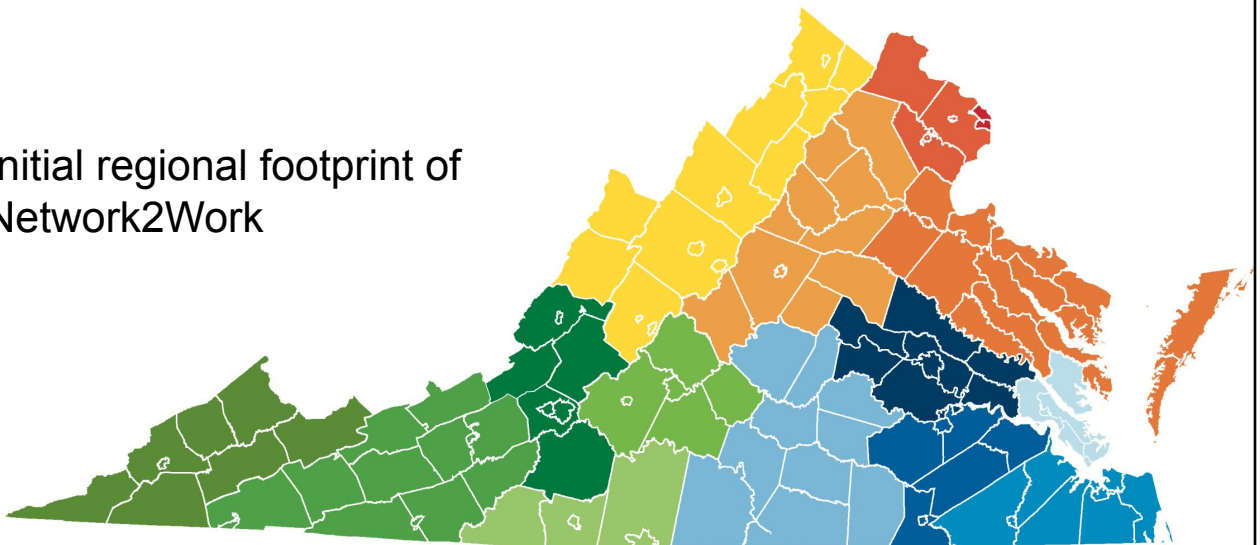
Governor Northam Announces Expansion of Innovative Workforce Program to Help Get Virginians Back to Work

Virginia to invest \$1.7 million to scale up Network2Work initiative connecting job seekers to high-quality careers, wraparound supports

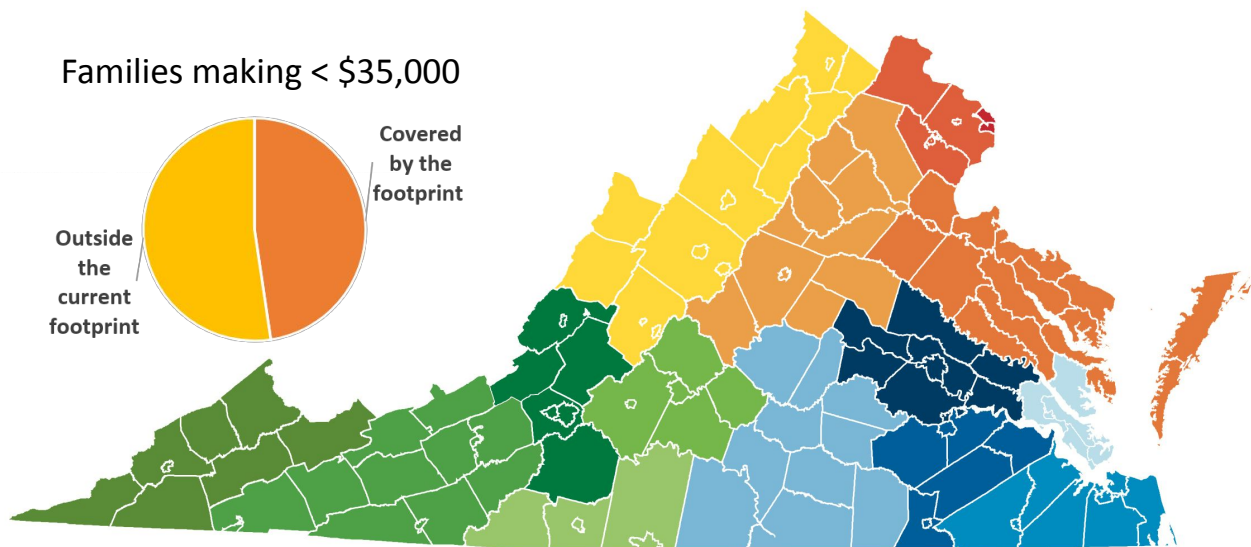
RICHMOND—Governor Ralph Northam today announced that Virginia will invest \$1.7 million over the next two years to expand the innovative Network2Work program, a unique workforce development initiative established by Piedmont Virginia Community College (PVCC) that connects job seekers with local job networks and support services. The Commonwealth will work in partnership with the Virginia Community College System to scale up the Network2Work model in the Shenandoah Valley, Hampton Roads, and Greater Richmond regions.

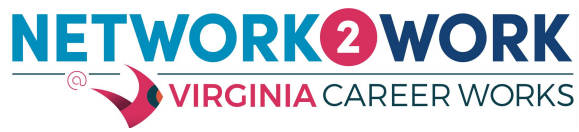
NETWORK2WORK
@ VIRGINIA CAREER WORKS

Initial regional footprint of Network2Work



Families making < \$35,000





THANK YOU!

Ridge Schuyler, Pilot Director
Network2Work@
Virginia Career Works
rschuyler@pvcc.edu